

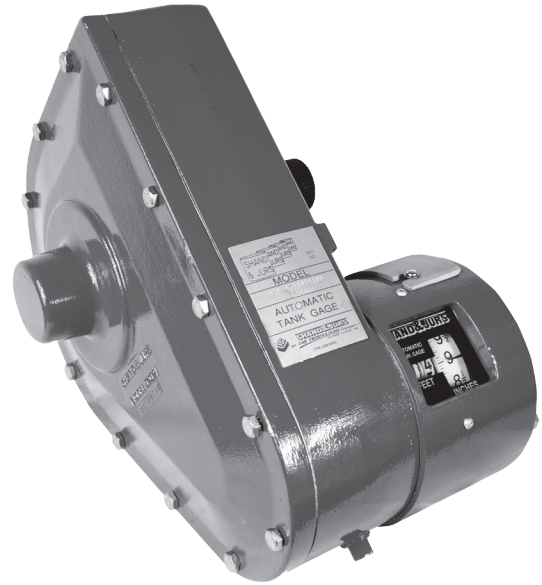
92021 Automatic Tank Gauge

The Shand & Jurs 92021 Automatic Tank Level Gauge is a float actuated tape driven gauge and by means of a digital counter indicates float travel accurately to 1/16 inch. The 92021 meets all the specifications and recommendations of the American Petroleum Institute in accordance with API Bulletin 2509B.

This Automatic Tank Gauge comes equipped with the Acutrak 90™ modular cartridge kit. The kit consists of a spring motor drum, a power hub and a stainless steel constant power spring. The cartridge and tape drum are constructed of RYTON®, a specially engineered polymer that offers outstanding chemical resistance, mechanical strength and abrasion resistance. Also included in the tank gauge is an accurately perforated stainless steel tape. Bearing loads are well distributed through Teflon bushings rotating on polished stainless steel shafts.

Local readout is by means of a digital counter featuring large black numerals on a white background. Remote reading is added by simply removing the counter housing cover, installing a 2" coupling and bolting a transmitter in place of the counter housing cover. Gauge calibration is quick and easy. Loosen screws and swing open access plate; then simply rotate large inch wheel until counter wheels are set. This is the fastest and most positive calibration available on any float actuated counter type gauge.

Choice of materials, rugged construction and counter housing sealed from gauge head permits application of the gauging system to a wide variety of environmental conditions. An operational checker for manually jogging the tape to insure a "free movement" system is standard on gauge head as well as provisions for optional high and low level limit switches. A hand crank for manually raising and lowering the float is also optional. Complete accessory kits are available for all standard and most special tank configurations and cover a broad selection of materials.



Features

- 1/16" Accuracy
- 90 Foot gauging range
- Simple installation
- Ground or roof reading
- Completely automatic
- Easily serviced
- Economical

Specifications:

Type of service:

Normal (Aluminum)
Ammonia (Aluminum)
Severe (Iron)

Maximum Pressure:

15 PSIG, Normal or Ammonia Service
50 PSIG, Severe Service

Temperature Range:

-30° to 180°F*

Gauging Range:

to 90 feet (Standard)**
to 27.4 meters (Standard)**

* For service below -30°F consult factory.

** For higher ranges consult factory.

Materials of Construction:

Body and Cover:

Cast Aluminum (Normal & Ammonia Service)
Nodular Iron (Severe Service)

Counter Housing:

Cast Aluminum

Constant Power Spring:

Stainless Steel

Perforated Tape:

316 Stainless Steel

Sprocket Wheel:

Cast Aluminum

Tape Reel:

Ryton®

Bearing & Seals:

Ball Bearings and Teflon

Hardware:

Steel

Storage Hub:

Ryton®

Advantages & Benefits:

Accuracy

Large digital readout driven by accurately perforated tape meets API standards of accuracy.

Reliability

Long contact arc of tape on sprocket and non-jamming construction of rotating parts assure reliability. Constant tension on float results in accurate reading; also, ventilated counter housing is non-fogging.

Versatile

Low copper aluminum body, carefully selected materials for internals, optional features and accessories make this system adaptable to most products and storage vessels.

Economical

Limited number of mounting brackets minimize installation cost. Complete gauging system "kits" for each installation further reduce cost.

Easier Service

Negator spring and housing easily replaced.

Safe

Totally enclosed negator motor protects maintenance personnel during service.

Specifications:

Type of Kit Class:

Class (A) Normal Service
Class (B) Ammonia Service
Class (C) Severe Service

Maximum Pressure:

15 PSIG* (With Standard 316 Stainless Steel Float)
50 PSIG* (With Reinforced 304 Stainless Steel Float)

Support Bracket:

Steel

Anchor Bar:

Steel

Guide Wire Spring Assembly:

Steel

Guide Wire:

Stainless Steel

Pulley Housing:

Cast Aluminum - Class A & B; Nodular Iron- Class C

Pulley:

Delrin - Class A; Cast Aluminum - Class B Class C

Floats:

Model JB3010 - 21

Standard Stainless Steel Pan Float (11-3/4" Diameter)
15 PSIG with guides (13-1/4" Centers)

Model JB3025-18

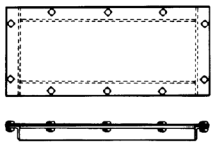
Stainless Steel Pan Type Float (17-1/4" Diameter)- for
Floating Roof tanks below 3 PSIG without guides

Model JB3031-1

Reinforced Stainless Steel Pan Type Float (11-3/4"
Diameter) 50 PSIG with guides (13-1/4" Centers)

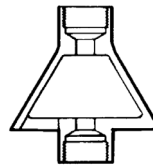
*50 PSIG service available for Kit No. 12C & 14C

Auxiliary Gauging Accessories:



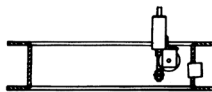
Inspection Frame & Cover Model JB3530-1

Recommended for use on in-service
cone roof tank, Type I, installation
through existing manhole.



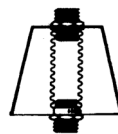
Ventilator Model JB3555-2

Recommended to prevent corrosive
vapors from entering the gauge
head.



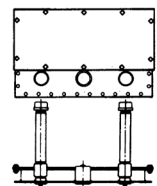
Model JB3516-2 (20" API) or JB3516-3 (24" API)

Manhole adapter & Cover for use
on in-service cone roof tank, Type II,
installation through existing manhole.



Flexible Tank Entry Model 9399-19000

Provides a non-rigid tape entry if roof
movement is present.



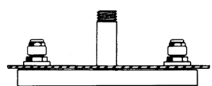
Model JC3517-2

Recommended for use on tank entry
in-service cone roof tank, Type III,
installation through tank top.



Tape/Cable Block Valve Model 93421

Isolates the gauge head from tank;
recommended for inspection and
servicing of gauging system.



Model JB3518-3

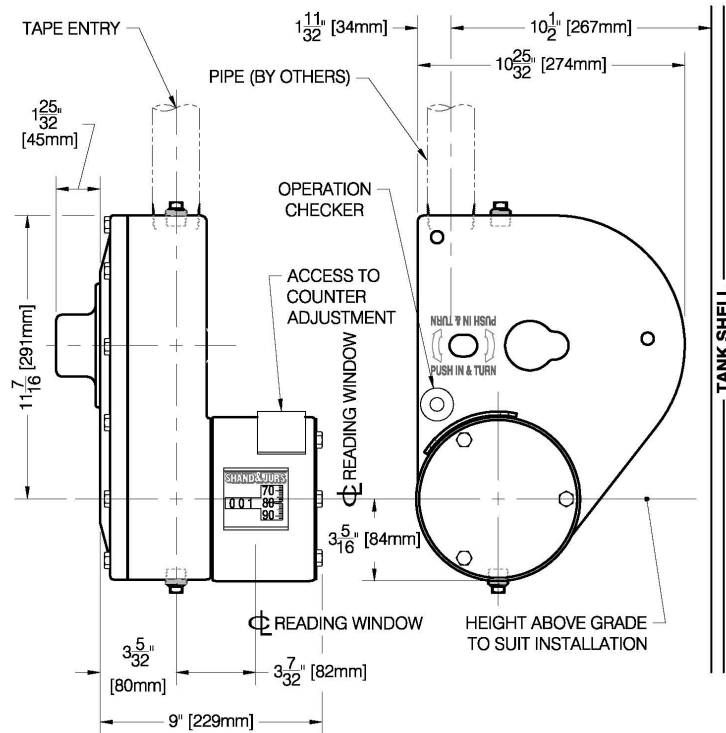
Tank entry assembly for in-service
cone roof tank, Type IV, installation
through tank top.



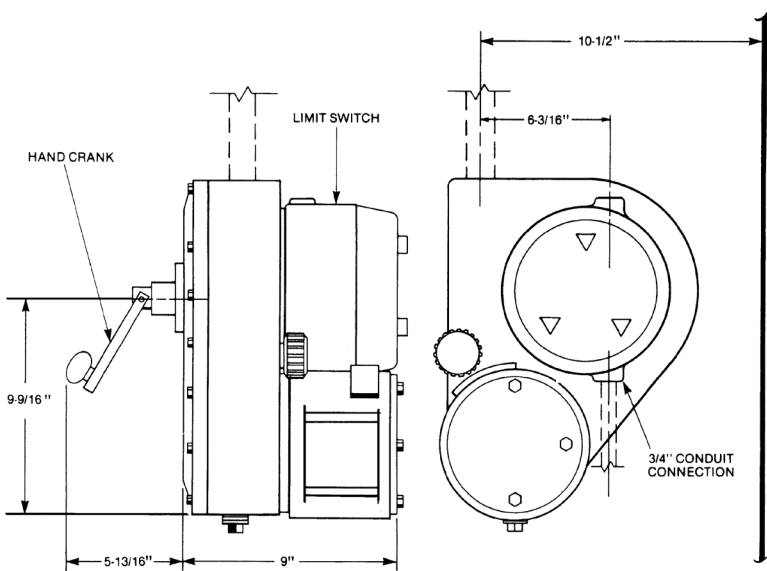
Limit Switch Model 99050

Contains up to 6 cam operated
switches in an explosion-proof housing
for Class I, Group D, Division 1. Switches
can be used to indicate high and/or
low level alarms, or to actuate pump,
motor operated valves or other
actuating equipment.

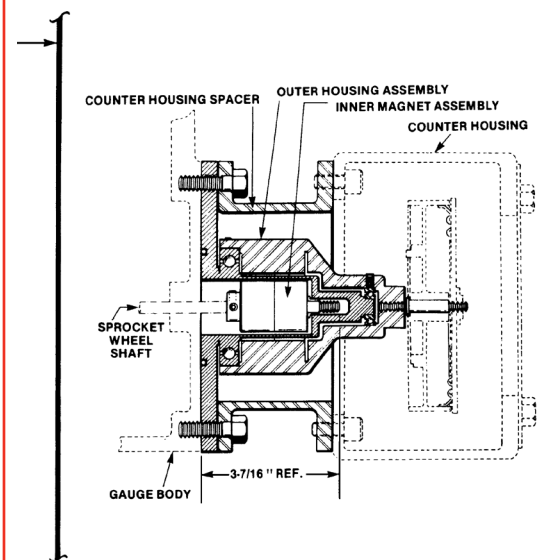
Outline Dimensions



Shipping Weight: 46 LBS. Horizontal center line of reading window.
Install at any height above grade to suit installation.



Model 92021 Gauge Head with
Model 99050 Limit Switch and Float Lifting
Hand Crank Option



Magnetic Drive Motor Option

All designs subject to change. Certified dimensions and specifications available upon request.