

94116 Snap Action Vacuum Breaker

The Shand & Jurs 94116 Snap Action Vacuum Breaker permits high capacity atmospheric air flow at low differential pressures to be drawn into the liquid storage tank or pressure vessel when the internal vacuum pressure exceeds the vent setting.

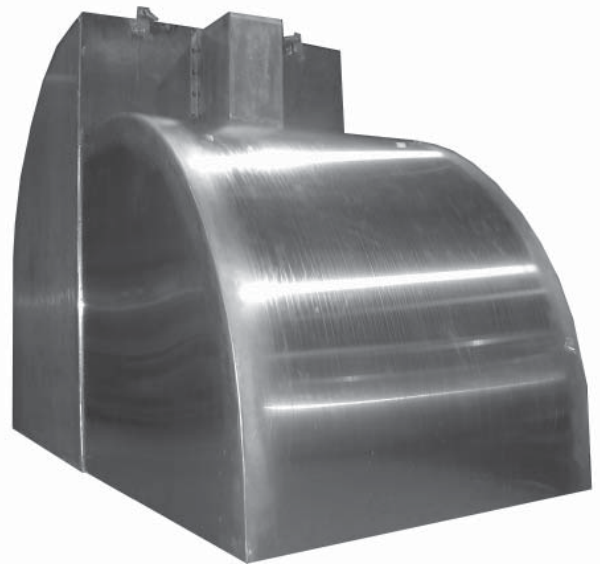
The vent uses a magnetic latch system to hold the seal closed tightly at vacuum levels lower than the setting and at positive pressures. The set point is achieved by the magnetic force of a permanent magnet that attracts a ferrous plate attached to the pallet.

When the tank vacuum pressure reaches the set point, it overcomes the magnetic force and allows the pallet to instantly swing open, providing for 100% opening at set pressure with no overpressure required.

This feature provides greater flow capacities than conventional weight loaded vents.

The 94116 is designed for operation at static pressures up to 1.5 PSIG. Vacuum settings are available from 0.4 to 1.5 inches water column. They are designed for replacement of a rupture disc or in situations where self reclosing, high vacuum capacity is required.

The design incorporates a body that is self-draining and uses a vertical hinged pallet. These features prevent collection of condensates on the seating surface, which can lead to improper functioning of the vacuum vent.



Features

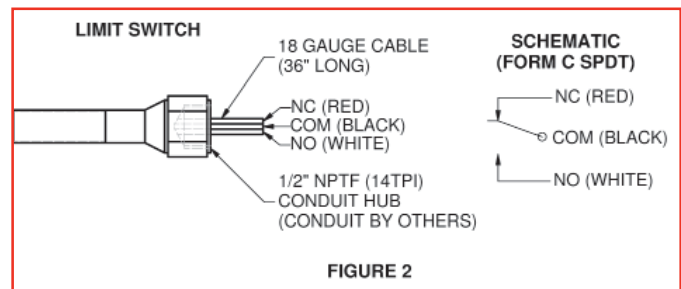
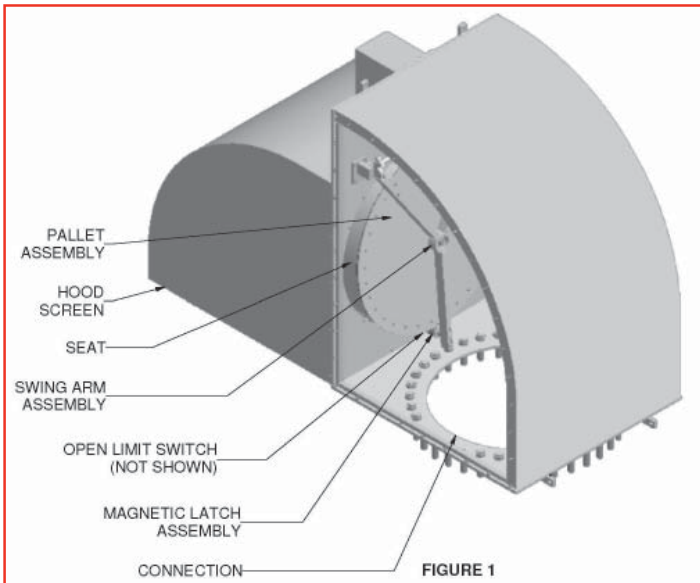
- High flow capacity at low differential pressure
- Snap Action requires no over pressure
- Vacuum settings as low as 0.4" W.C.
- Static pressure to 1.5 psig (MAWP)
- Light weight / High strength design

Standard Materials of Construction

Description	Standard	Optional
Body:	Aluminum	316 Stainless Steel
Swing Arm:	Aluminum	316 Stainless Steel (1)
Pallet:	Aluminum	316 Stainless Steel (1)
Diaphragm:	Buna N	Buna N
Spacer:	Nitrile Fiber	Nitrile Fiber
Shaft:	Stainless Steel	Stainless Steel
Seat:	Aluminum	316 Stainless Steel
Hood:	Aluminum	316 Stainless Steel
Screen:	Galvanized Steel	316 Stainless Steel
Internal Hardware:	Stainless Steel	316 Stainless Steel
External Hardware:	Zinc Plated Steel	316 Stainless Steel
Process Stud:	Zinc Plated Steel	316 Stainless Steel
Counterweights:	Lead	Lead
Misc. Hardware:	Stainless Steel and Bronze	Stainless Steel and Bronze

(1) Not Available for low Vacuum set points (Consult Factory).

Outline Dimensions



All designs subject to change. Certified dimensions and specifications available upon request.

94116 Ordering Guide

Model Number Selection

The model number will consist of a base number **94116** followed by 8 digit numbers. These digits will represent 7 option tables.

94116 - AB - CD - EF - GH

Ordering Information

Specify:

1. Model 94116 Snap Action Vacuum Breaker
2. Size and Body Material
3. Flange Type
4. Softgoods
5. Seat & Pallet Material
6. Vacuum Setting
7. Accessories
8. Orientation

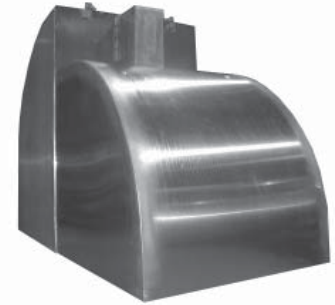


Table AB - Size and Material

Option AB	Size	Body Material
12	16"	Aluminum
22	16"	316 Stainless Steel
14	20"	Aluminum
24	20"	316 Stainless Steel
15	24"	Aluminum
25	24"	316 Stainless Steel
16	30"	Aluminum
26	30"	316 Stainless Steel
17	36"	Aluminum
27	36"	316 Stainless Steel
18	42"	Aluminum
28	42"	316 Stainless Steel

Table F - Vacuum Setting

Option F	Description	Material
0	.4" to .6" W.C.	Lead
1	>.6" to 1.0" W.C.	Lead
2	>1.0" to 1.5" W.C.	Lead

Table G - Accessories

Option G	Description
0	None
1	Open Limit Switch (SPDT-XP)

XP = Explosion Proof

Table C - Flange Type

Option C	Flange Type*
0	FF ANSI
1	FF API 650
2	FF API 605

* Bolt holes match pattern.
API 650 Flange type available only in 20" and 24" sizes.

Table D - Pallet Softgoods*

Option D	Seal Type
0	Buna N / Fiber

*Other material options available.

Table E - Seat & Pallet Material

Option E	Seat	Pallet
0	Standard*	Standard
1	316 SS	
2	Teflon Coated SS	
A	Standard*	316 Stainless Steel**
B	316 SS	
C	Teflon Coated SS	

* Standard Seat and Pallet Material same as body.
** Not available for low vacuum set point (Consult Factory)

Table H - Orientation

Option H	Description
0	Left Side Access Panel
1	Right Side Access Panel