

94530 Snap Action Vacuum Vent

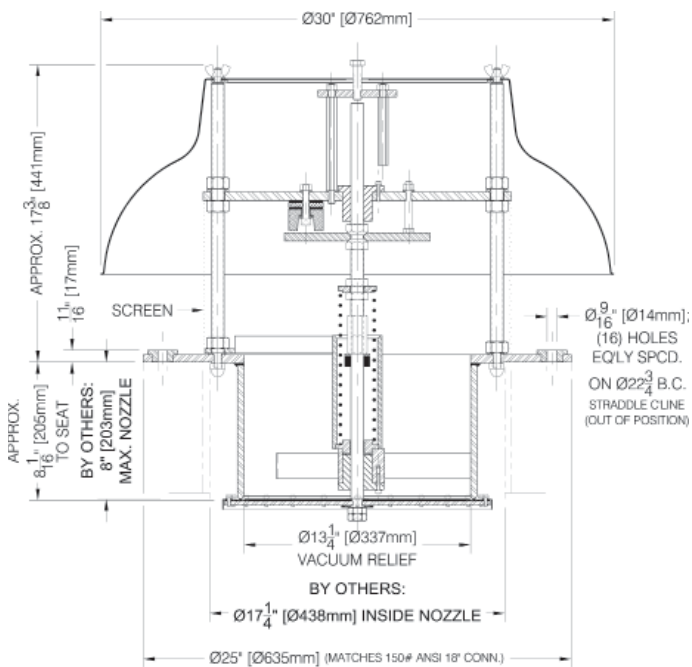
The Shand & Jurs 94530 Snap Action Vacuum Vent permits air flow into liquid storage tanks when the internal vacuum exceeds the vent setting.

The vent is held closed tightly at vacuum levels lower than the setting and at positive pressures. It is designed for operation at static pressure up to 3 PSI and at temperatures between -20 and +220 degrees Fahrenheit. Vacuum settings are available up to 43 inches water column. The body is mounted into the tank nozzle. Nozzle depth on tank should not exceed 8".

Designed for replacement of ruptured disc where system pressure spikes cause premature rupture disc opening.



Outline Dimensions



18" 94530 Shown.

All designs subject to change. Certified dimensions and specifications available upon request.

Features

- Magnetic latched for full open instantly at set pressure
- No overpressure required for full open
- High flow capacity upon opening
- Tight seal up to set point
- Sizes available for standard API and ANSI connections

Specifications

Standard Vacuum Setting:

10", 12", & 14":	- 8 oz. to -2 psi
16", 18":	- 8 oz. to -1.5 psi
20":	- 8 oz. to -1 psi

94530 Ordering Guide

Model Number Selection

The model number will consist of a base number **94530** followed by 6 digit numbers. These digits will represent 4 option tables.

94530 - AB - CD - EF

Ordering Information

Specify:

1. Model 94530 Snap Action Vacuum Vent
2. Size and Body Material
3. Pressure Set Point



Table A - Body Material

Option A	Body Material
1	Steel
2	Stainless Steel
3	Aluminum

Table B - Sizes

Option B	Size
1	10"
2	12"
3	14"
4	16"
5	18"
6	20"

Table CD - Pallet Material

Option CD	Pallet Material
01	Aluminum
02	Stainless Steel
03	Steel

Table EF - Set Point

Option EF	Set Point
01	8 oz. to 1 psi
02	1 psi to 1.5 psi
03	1.5 psi to 2 psi